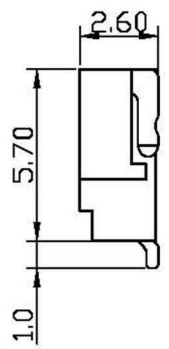
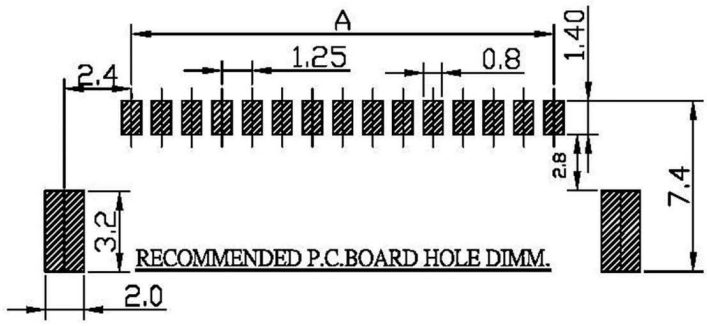
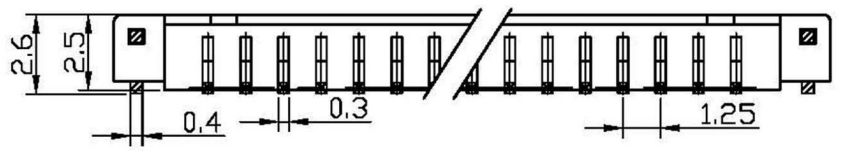
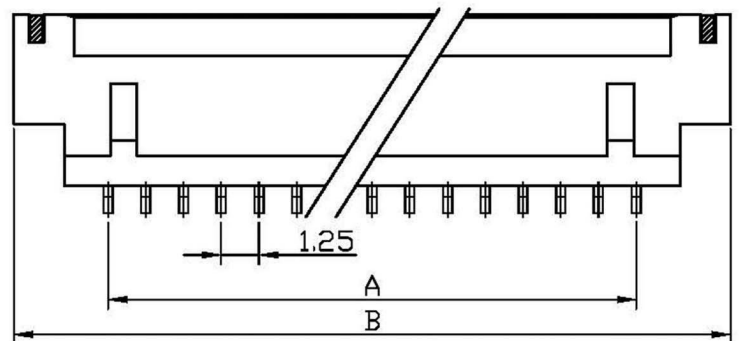
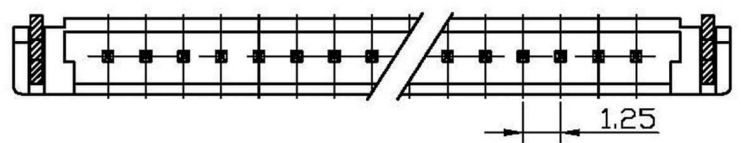


1 2 3 4 5 6 7 8

A
B
C
D
E
F
G
H



SPECIFICATIONS

Electrical
 Current Rating: 1A AC, DC
 Voltage Rating: 150V AC/ max.
 Operating Temp.: -25°C ~ +85°C
 Insulation Resistance: 500MΩ/ min.
 Withstand Voltage: 500V AC/ min.
 Contact Resistance: 30mΩ/ max.

Material
 Terminal Material: Brass/ Tin-plated
 Material: Nylon 6T, UL94V-0

Poles	Dimension mm (in.)	
	A	B
20	23.75 (0.935)	30.00 (1.181)
25	30.00 (1.181)	36.25 (1.427)
30	36.25 (1.427)	42.50 (1.673)

APPD. 核准 Karen DWG. 製圖 Yumi DATE 制表日 2011/04/22	SCALE 比例 參考 UNIT 單位 M M PAGE 張數 1 OF 1	TOLERANCE 容許公差 XXX ± 0.15 XX ± 0.25 ANG. ±	PART NAME 品名 1.25mm WAFER SMT RIGHT ANGLE 1XXXP TIN PLATED IVORY COLOR ROHS LOW-LEAD
			PART NO. 料號 W1353-XXPBTX10R

1 2 3 4 5 6 7 8